

FITTING INSTRUCTIONS

WARNING:

Before you begin installation, read all instructions thoroughly.
Proper tools will improve the quality of installation and reduce the time required.

- This product should be installed as demonstrated in the *Product «Fitting Instructions»*;
- The specified parts, will only fit the models specified by **AFN**;
- Do not modify any component of the product;
- It is recommended that this product is installed by specialized and trained personnel;
- AFN doesn't take responsibility for changes made in the vehicle by its manufacturer;
- Work safely and use specialized tools at all times;
- **Always use protective gear.**

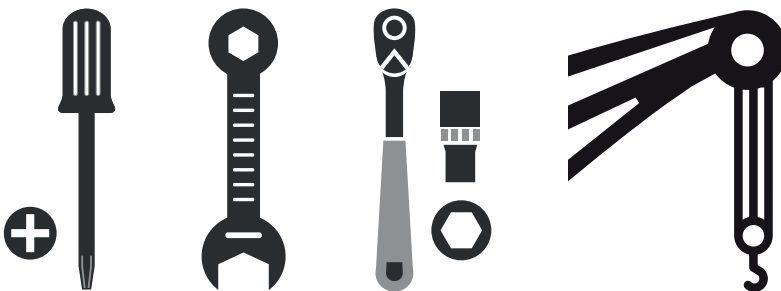


| Size | Torque Nm | Torque lbft |
|------|-----------|-------------|
| M6 | 9 Nm | 7 lbft |
| M8 | 22 Nm | 16 lbft |
| M10 | 44 Nm | 32 lbft |
| M12 | 77 Nm | 57 lbft |

Mouting Time

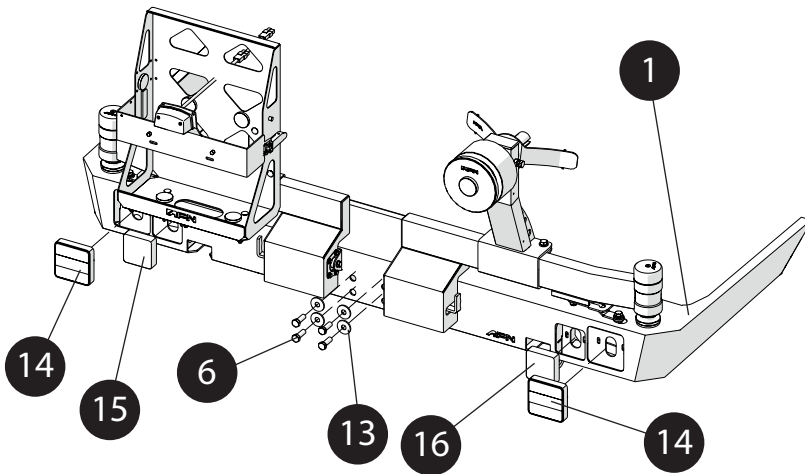
- 2 hours
- 1 persons (recommended)

Tools Required



- Screwdriver star head
- Wrench
- Ratchet wrench
- Crane

STEP1 - FITTING AFN REAR BUMPER IN VEHICLE (Rear Lights)



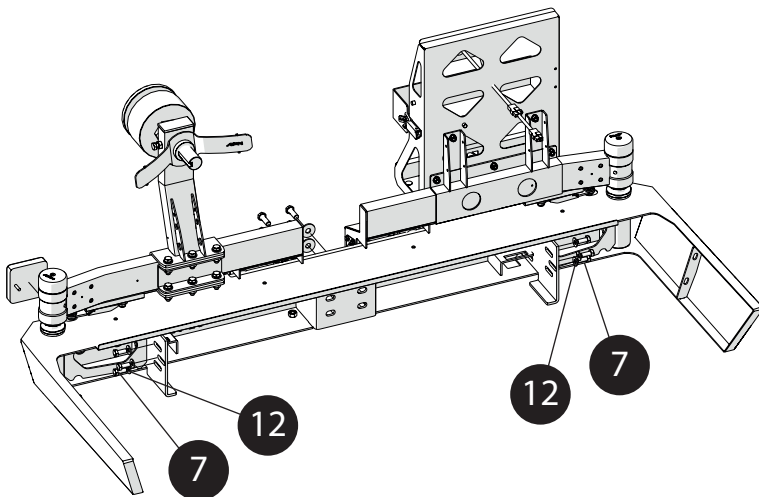
| NUMBER | REF | QUANTITY |
|--------|----------|----------|
| 1 | 47001051 | 1x |
| 6 | 45001592 | 4x |
| 13 | 45001250 | 4x |
| 14 | 45001064 | 2x |
| 15 | 45001065 | 1x |
| 16 | 45001066 | 1x |

Once both OEM* Rear Bumper and OEM* Tow Bar are removed it's time to fit the **AFN Rear Bumper(1)**. But first, take on Rear Lights(14), (15) and (16) and fit them on the AFN Rear Bumper(1).

Use supplied Bolts to fit the Rear Lights.

Do not tighten yet.

STEP1.1 - FITTING AFN REAR BUMPER IN VEHICLE (inner view)



| NUMBER | REF | QUANTITY |
|--------|----------|----------|
| 7 | 45001589 | 6x |
| 12 | 45001254 | 6x |

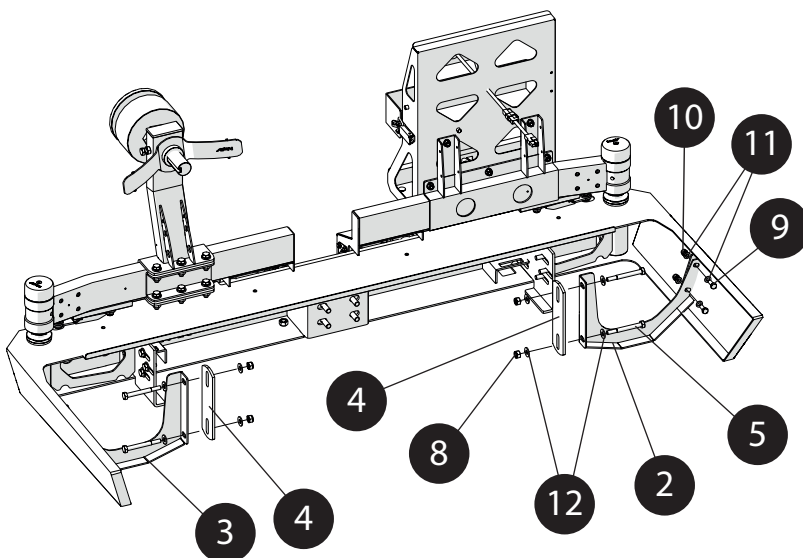
Once that is done, fit the **AFN Rear Bumper(1)** in the vehicle.

Use 6x Bolts M10x25(7) with 6x Washers M10(12).

Then, use 4x Bolts M12x25(6) with 4x Washers M12(2).

Do not tighten yet.

STEP2 - FITTING REINFORCEMENTS IN AFN REAR BUMPER



| NUMBER | REF | QUANTITY |
|--------|----------|----------|
| 2 | 46005336 | 1x |
| 3 | 46005335 | 1x |
| 4 | 46002019 | 2x |
| 5 | 45001593 | 4x |
| 8 | 45001554 | 4x |
| 9 | 45001536 | 4x |
| 10 | 45001521 | 4x |
| 11 | 45001255 | 8x |
| 12 | 45001254 | 8x |

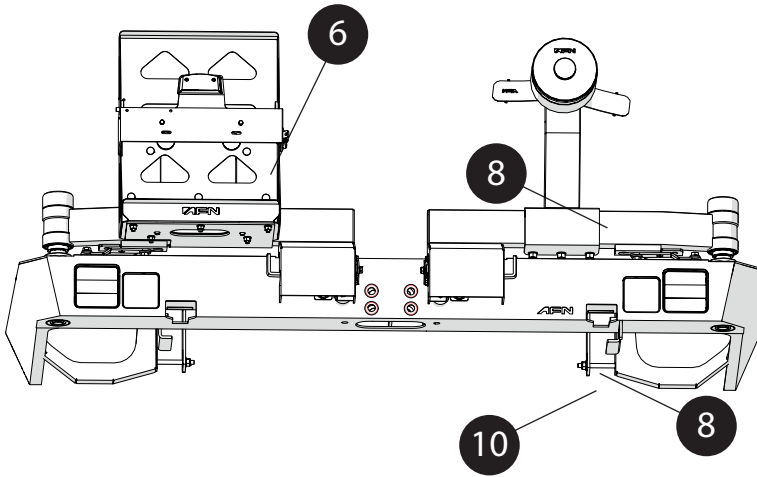
Once the **AFN Rear Bumper(1)** is secured, fit the Rear Reinforcements (2) and (3) with Reinforcement Plates (4).

Use 2x Bolts M10x90x25(4) with 4x Washers M10(12) and 2x Nylock Nuts M10(8).

2x Bolts M8x20(9) with 4x Washers M8(11) and 2x Nylock Nuts M8(10).

Repeat this step on the other side.

STEP2 - FITTING AFN BUMPER IN WINCH BRACKET



| NUMBER | REF | QUANTITY |
|--------|----------|----------|
| 6 | 45000277 | 2x |
| 8 | 45000066 | 2x |
| 10 | 45000036 | 4x |

Once everything seems in place start full tightening all bolts following this manual's order.

Give the final torque.

The highlighted areas (red circles) are for the OEM* Tow Bar.