

48002212

AFN
acessórios 4x4



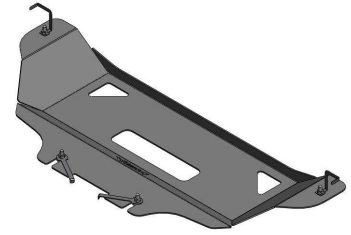
Checklist / Manual de Montagem -
Transferbox Skid plate - Steel - Isuzu D-Max



Checklist / Fitting Instructions - Transferbox
Skid plate - Steel - Isuzu D-Max



Despiezas / Instrucciones de montaje -



1h



1 x1

47001626



2 x1

47001625



3 x2

47001623



4 x1

46005986



5 x4

45000010



6 x4

45000007



Anilha Aba Larga M10

Prf.Cb.Sx.M10x30x1,5

Isuzu D-max Double
Cab - 2 Generation
(2014-)

AFN
acessórios 4x4

Acessórios: ___ / ___ / ___ | Peças/Compostos: ___ / ___ / ___ | Artigo: ___ / ___ / ___ | Embalagem: ___ / ___ / ___

Thank you for choosing AFN products, a lot of time in R&D has gone into perfecting our products. However, if you find problems with any AFN products you have purchased, or if you have any information which would help us to improve our products, please let us know.

If you think there may be a problem either before or after fitting the AFN product, it is best to contact your nearest AFN distributor.

WARNING

- This product should be installed as demonstrated in the product fitting instructions.
- If verified that any component is damaged, please contact your nearest AFN distributor.
- The specified parts, will only fit the models specified by AFN.
- Do not modify any component of the product.
- It is recommended that this product is installed by specialised and trained personnel.
- AFN cannot be responsible for any changes made by the vehicle manufacturer.
- Work safely and use specialised tools at all times.
- Always use protective gear.



size	Torque Nm	Torque lbft
M6	9Nm	4 lbft
M8	22Nm	16 lbft
M10	44Nm	32 lbft
M12	77Nm	57 lbft

- Tools set required:



CONTACTS

R. da Madeira, nº 113
Z. Industrial das Travessas
3700-176 S. João da Madeira
Portugal

Tel.: (+351) 256 838 300
Fax: (+351) 256 838 305
www.afn.pt
geral@afn.pt

COORDINATES

DATUM: European 79
UTM 05.44.100
29T 45.28.300
N 40°54' 14.0"
W 08°28' 35.0"

01

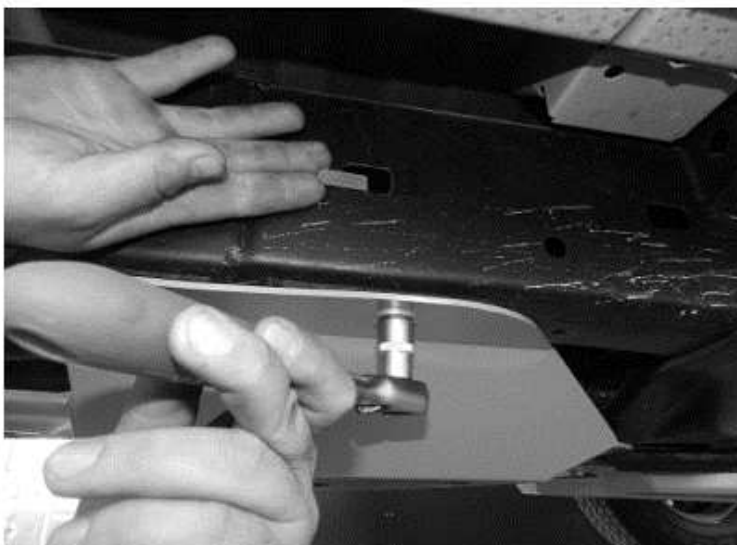
- Fit part number 46005983 (steel) or 46005986 (aluminum) with 47001623

- Bolts needed
45000007 / 45000010

02

- Fit part number 47001625 (right side) and 47001626 (left side)

- Bolts needed
45000007 / 45000010

03

- After aligned the transferbox skid plate, and once all bolts are in place, please give the final tight (use the table shown in the second page).