

48002285

AFN
acessórios 4x4



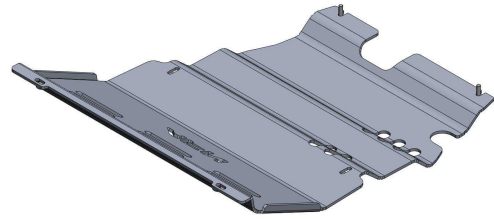
Checklist / Manual de Montagem - Sump guard - AI - L200 2015



Checklist / Fitting Instructions - Sump guard - AI - L200 2015



Despiezas / Instrucciones de montaje -



1h



x 1

1 x1

46006383



2 x6

45000011



Anilha aba larga M8

3 x2

45000008



Prf. Cb. Sx. M8x30



12/ 13



Mitsubishi L-200 Did
Triton Cab. Dupla -
Mod. 2015 (15-)



Acessórios: ___ / ___ / ___ | Peças/Compostos: ___ / ___ / ___ | Artigo: ___ / ___ / ___ | Embalagem: ___ / ___ / ___

Thank you for choosing AFN products, a lot of time in R&D has gone into perfecting our products. However, if you find problems with any AFN products you have purchased, or if you have any information which would help us to improve our products, please let us know.

If you think there may be a problem either before or after fitting the AFN product, it is best to contact your nearest AFN distributor.

WARNING

- This product should be installed as demonstrated in the product fitting instructions.
- If verified that any component is damaged, please contact your nearest AFN distributor.
- The specified parts, will only fit the models specified by AFN.
- Do not modify any component of the product.
- It is recommended that this product is installed by specialised and trained personnel.
- AFN cannot be responsible for any changes made by the vehicle manufacturer.
- Work safely and use specialised tools at all times.
- Always use protective gear.



size	Torque Nm	Torque lbft
M6	9Nm	4 lbft
M8	22Nm	16 lbft
M10	44Nm	32 lbft
M12	77Nm	57 lbft

- Tools set required:



CONTACTS

R. da Madeira, nº 113
Z. Industrial das Travessas
3700-176 S. João da Madeira
Portugal

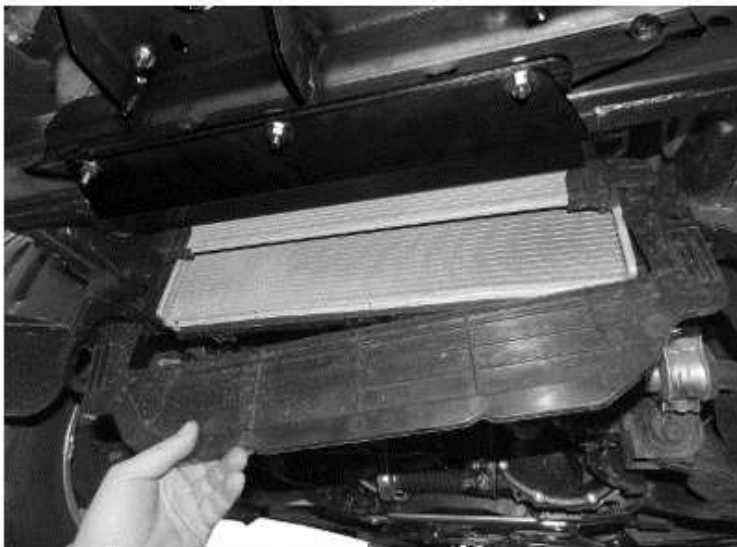
Tel.: (+351) 256 838 300
Fax: (+351) 256 838 305
www.afn.pt
geral@afn.pt

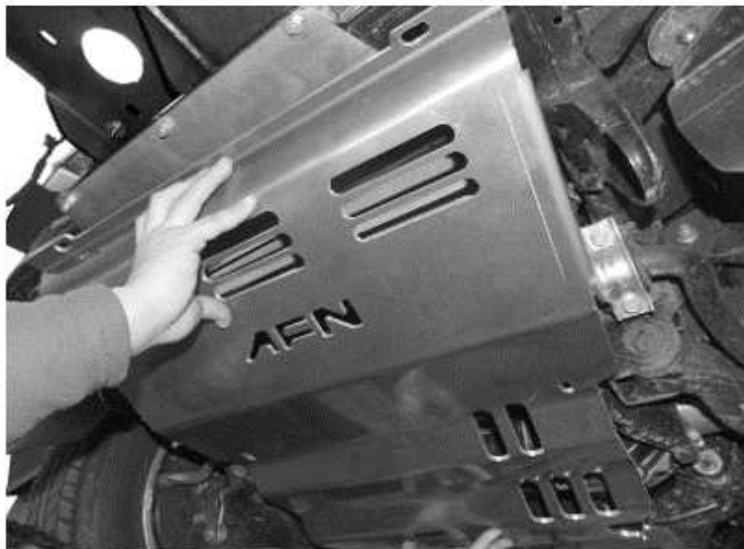
COORDINATES

DATUM: European 79
UTM 05.44.100
29T 45.28.300
N 40°54' 14.0"
W 08°28' 35.0"

01

- Remove the original skid plate and plastic.

02**03**

04

- Fit part number:

1- 46006383

05

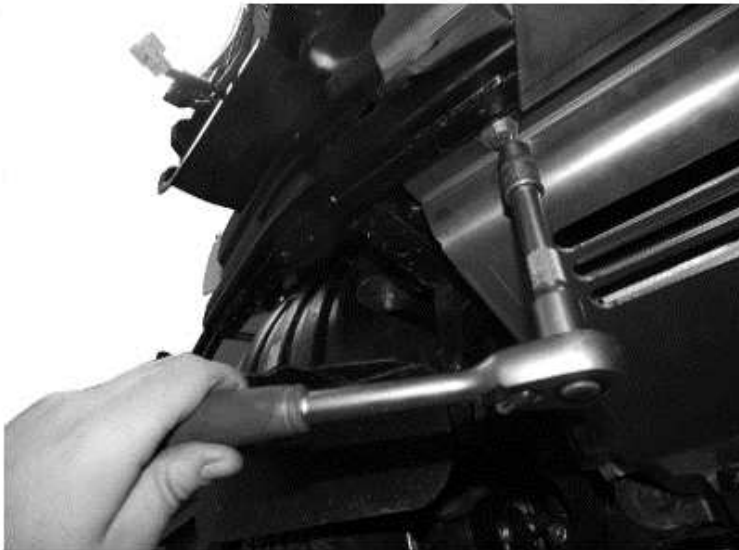
Bolts needed:

45000008/ 45000011 (on both sides)

06

Bolts needed:

45000011 and oem bolt (on both sides)

07

Bolts needed:
45000011 and oem bolt (on both
sides)

08

Please use the right torque on all
the bolts.

(Use the table shown on the first
page)