

48002289

AFN
acessórios 4x4



Checklist / Manual de Montagem - Rear skid plate - AI - VW Amarok



Checklist / Fitting Instructions - Rear skid plate - AI - VW Amarok



Despiezas / Instrucciones de montaje -

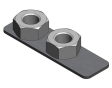


30m
in



1 x2

47001695



2 x1

46006349



3 x2

46006348



4 x1

46006347



17



17

5 x12

45000039



6 x4

45000017



7 x8

45000007



Anilha M10

Fêmea Freiada M10

Prf.Cb.Sx.M10x30x1,5

Volkswagen VW
Amarok (2010-)



Acessórios: ___ / ___ / ___ | Peças/Compostos: ___ / ___ / ___ | Artigo: ___ / ___ / ___ | Embalagem: ___ / ___ / ___

Thank you for choosing AFN products, a lot of time in R&D has gone into perfecting our products. However, if you find problems with any AFN products you have purchased, or if you have any information which would help us to improve our products, please let us know.

If you think there may be a problem either before or after fitting the AFN product, it is best to contact your nearest AFN distributor.

WARNING

- This product should be installed as demonstrated in the product fitting instructions.
- If verified that any component is damaged, please contact your nearest AFN distributor.
- The specified parts, will only fit the models specified by AFN.
- Do not modify any component of the product.
- It is recommended that this product is installed by specialised and trained personnel.
- AFN cannot be responsible for any changes made by the vehicle manufacturer.
- Work safely and use specialised tools at all times.
- Always use protective gear.



size	Torque Nm	Torque lbft
M6	9Nm	4 lbft
M8	22Nm	16 lbft
M10	44Nm	32 lbft
M12	77Nm	57 lbft

- Tools set required:



CONTACTS

R. da Madeira, nº 113
Z. Industrial das Travessas
3700-176 S. João da Madeira
Portugal

Tel.: (+351) 256 838 300
Fax: (+351) 256 838 305
www.afn.pt
geral@afn.pt

COORDINATES

DATUM: European 79
UTM 05.44.100
29T 45.28.300
N 40°54' 14.0"
W 08°28' 35.0"

01

- First step - place the part number 46006347 against the axle.

02

- Put the brackets 46006348 over the axle and use the indicated bolts.

03

- Finger tight the bolts.
- Bolts needed
45000007 / 45000017 / 45000039

Do the same operation on both sides.

04

- Fit part number 46006349.

05

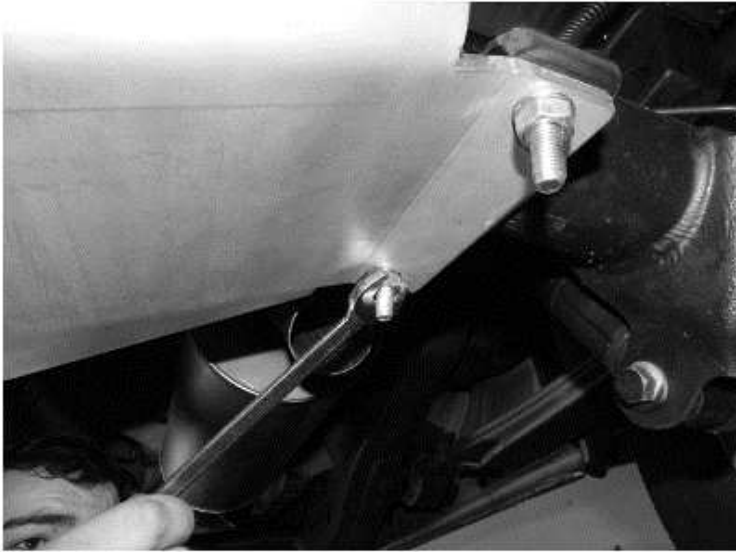
- Fit part number 47001695.

06

- Finger tight the bolts.

- Bolts needed

45000007 / 45000039

07

- After having all the bolts in place, please make sure the bracket 46006349 do not touch on the prop shaft. If is not touching, please tight all the bolts with indicated torque.

08**09**