

## FITTING INSTRUCTIONS

### WARNING:

Before you begin installation, read all instructions thoroughly.  
Proper tools will improve the quality of installation and reduce the time required.

- This product should be installed as demonstrated in the *Product «Fitting Instructions»*;
- The specified parts, will only fit the models specified by **AFN**;
- Do not modify any component of the product;
- It is recommended that this product is installed by specialized and trained personnel;
- AFN doesn't take responsibility for changes made in the vehicle by its manufacturer;
- Work safely and use specialized tools at all times;
- **Always use protective gear.**

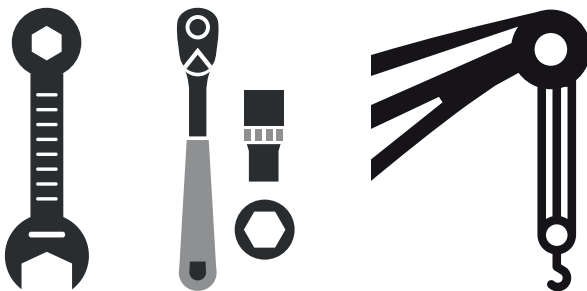


Size	Torque Nm	Torque lbft
M6	9 Nm	7 lbft
M8	22 Nm	16 lbft
M10	44 Nm	32 lbft
M12	77 Nm	57 lbft

### Mouting Time

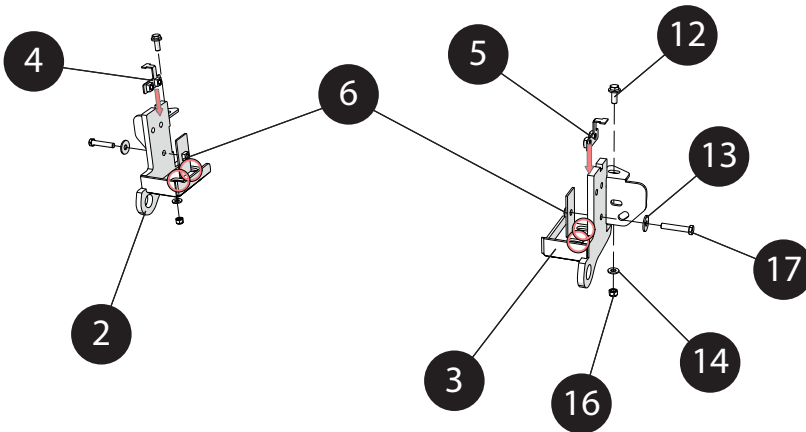
- 1 hour
- 2 persons (recommended)

### Tools Required



- Wrench
- Ratchet wrench
- Crane

## STEP1 - FITTING RECOVERY POINTS



NUMBER	REF	QUANTITY
2	47002505	1x
3	47002506	1x
4	47002507	1x
5	47002508	1x
6	47002509	2x
12	45001244	2x
13	45001250	2x
14	45001253	2x
16	45001558	2x
17	45001833	2x

Start by fitting both Recovery Points(2)(3) in the vehicle.

Use 1x Bolt M12x65(17) with 1x Washer M12(13) and 1x Nut Plate M12(6), each.

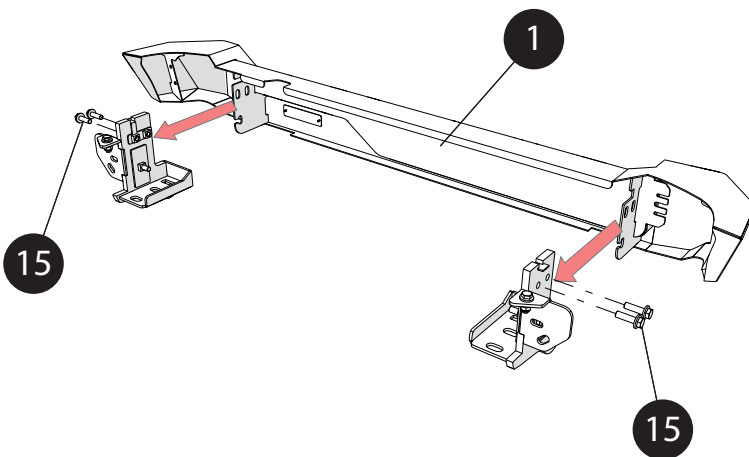
Then, on top use 1x Bolts M12x30(12) with 1x Washer M12(14) and 1x Nylock Nut M12(16), each.

On bottom, use 2x OEM Bolts, where the red circles are.

Finally, fit the Double Nut Plate(4) and (5).

**Do not tighten yet.**

## STEP2 - FITTING AFN REAR BUMPER IN THE VEHICLE



NUMBER	REF	QUANTITY
1	47002504	1x
15	45001437	4x

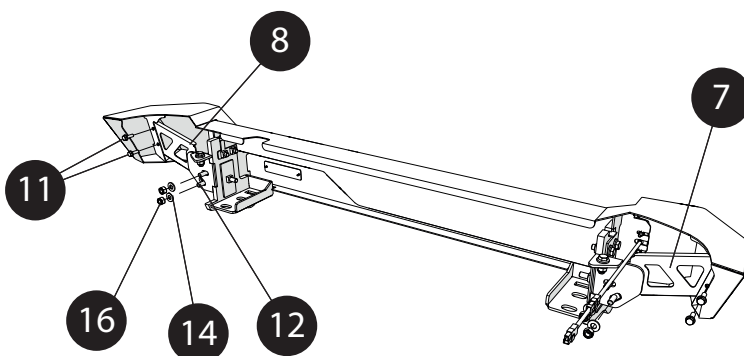
Once that is done, fit the AFN Rear Bumper(1) with help of a person, or a crane.

Use 4x Bolts M12x40(15).

They must be fitted to the Double Nut Plate(4) and (5).

**Do not tighten yet.**

## STEP3 - FITTING REINFORCEMENTS IN AFN REAR BUMPER



NUMBER	REF	QUANTITY
7	47002510	1x
8	47002511	1x
11	45001241	4x
12	45001244	4x
14	45001253	4x
16	45001558	4x

Once the AFN Rear Bumper(1) is secured, fit both Reinforcements(7)(8).

Use 2x Bolts M8x25(11) and the inner side use 2x Bolts M12x30(12), 2x Washers M12(14) and 2x Nylock Nuts M12(16), on each.

Once everything is in place,

**Give the Final torque.**